

Grasso FKS RRL / S

Specifications

Merk	Grasso
Type	FKS RRL / S
Product type	Water Cooled Chiller
Capaciteit kW	558,0
Capaciteit Tons	158,7
Koudemiddel	NH 3 (ammonia)
Gewicht in kg.	9000
Afmetingen	4350x2350x3000 mm (LxWxH)
Compressor(s) type & model	Grasso L-1
Display	Stahl MT-60
Opmerkingen	*Capacity based on the following temperatures: +4°C/+40°C (evaporating/condensing) and a cold water temperature of 6/12°C.
Stock	1

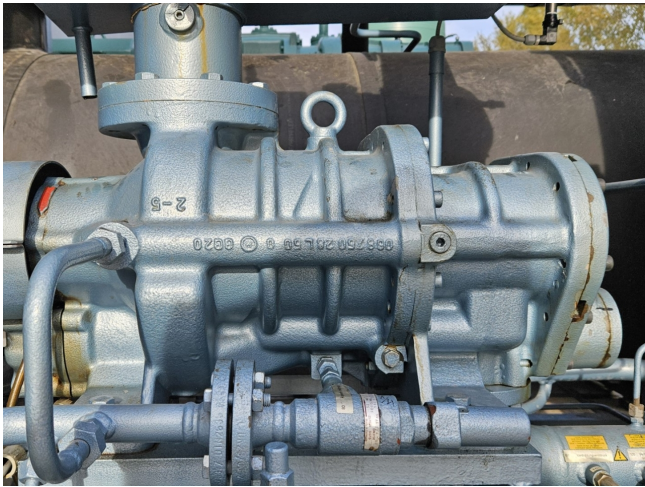


Description

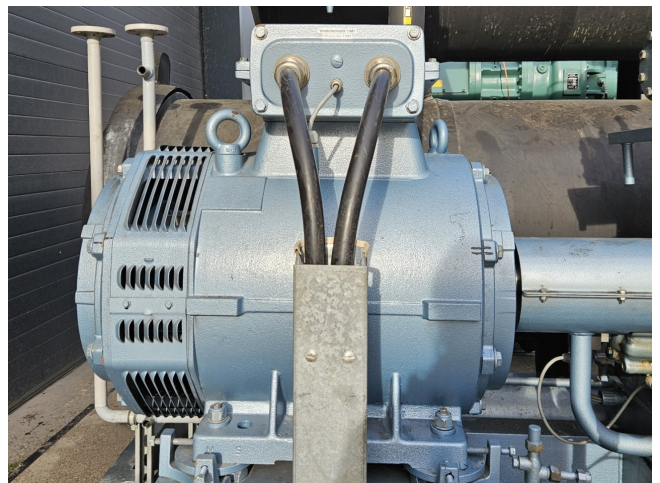
Used Grasso FKS RRL / S

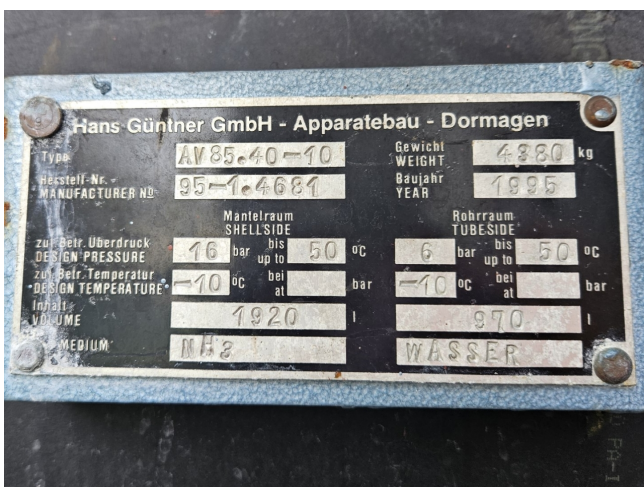
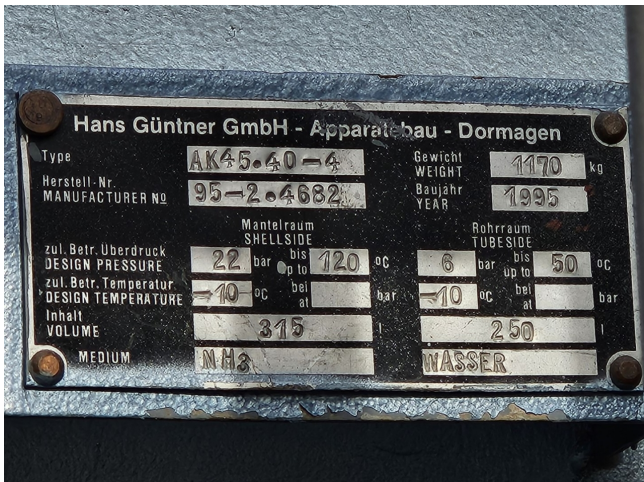
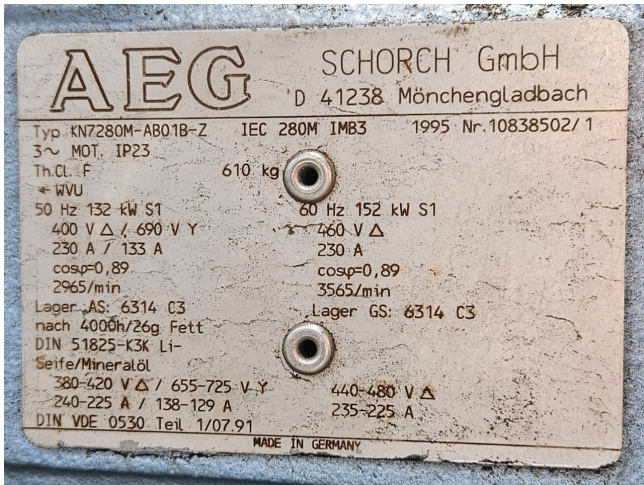
Gebruikte Grasso FKS RRL/S watergekoelde chiller op NH3 (Ammoniak). Compleet met Grasso L-1 schroefcompressor met AEG KN7280M-AB01B-Z elektromotor - 50/60 Hz - 132/152 kW - 2965/3565 RPM, Hans Güntner AV85.40-10 pijpenbundelverdampfer, Hans Güntner AK45 .40-4 shell and tube condensor, Grasso 64654 olieafscheider met een inhoud van 300 liter, oliekoeler, oliepomp, Grasso 65253 ontluichtingsklep, Witt HR 3 H vlotter en een bedieningspaneel met een Stahl MT-60 display. Capaciteit op basis van de volgende temperaturen: +4°C/+40°C (verdampen/condenseren) en een koudwatertemperatuur van 6/12°C.

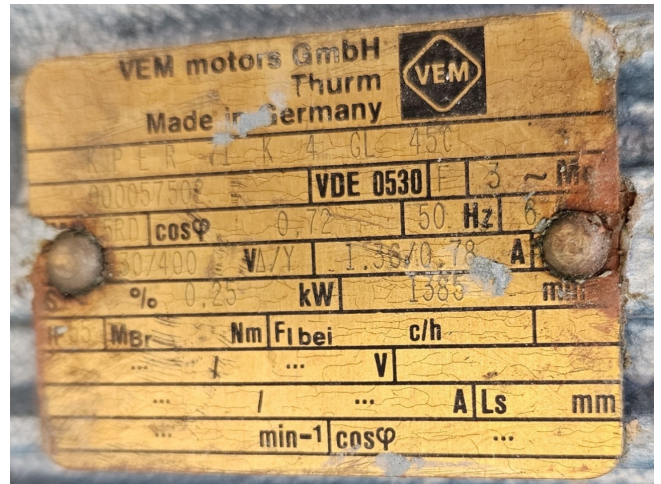
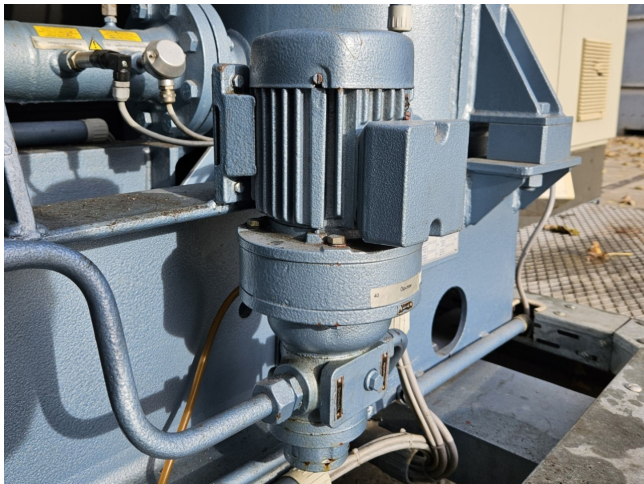
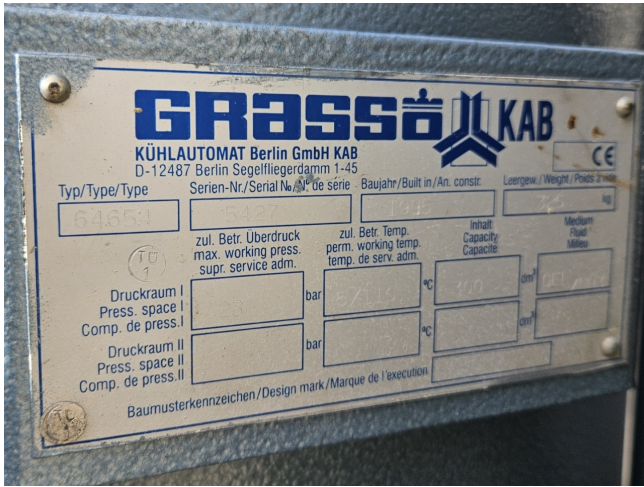


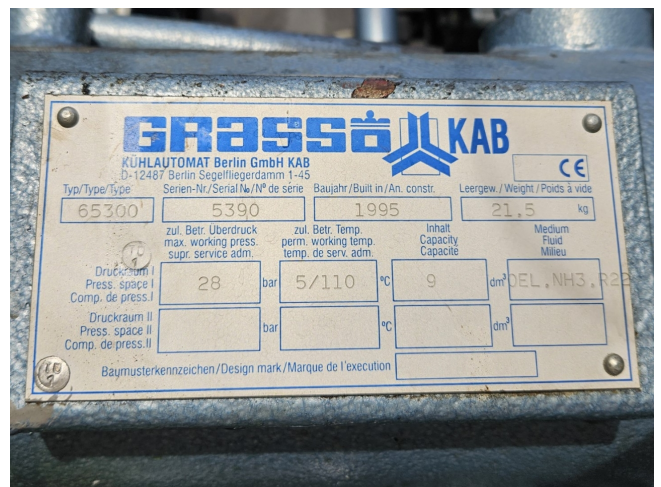
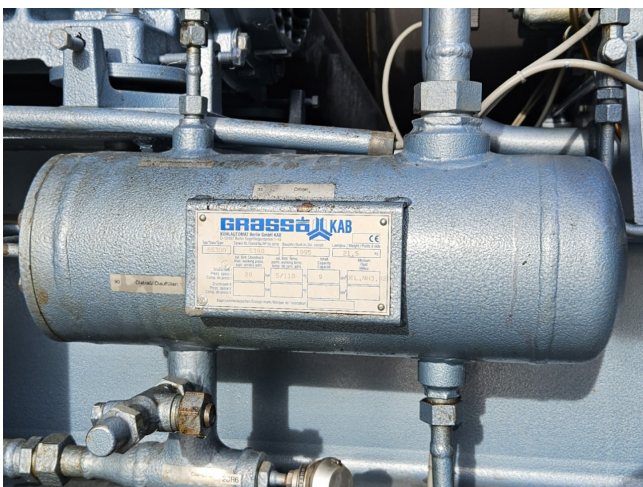
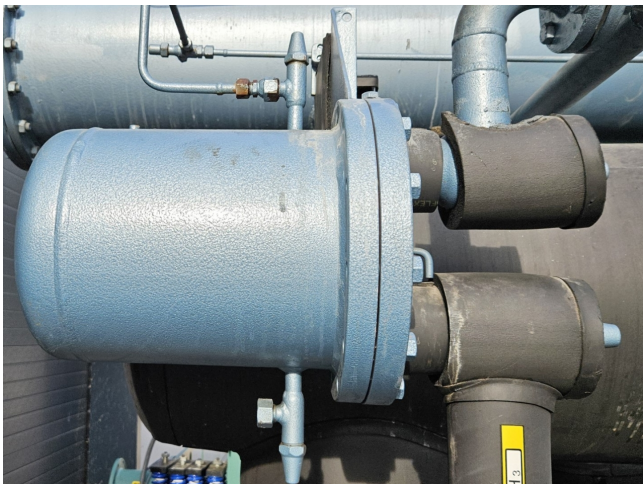
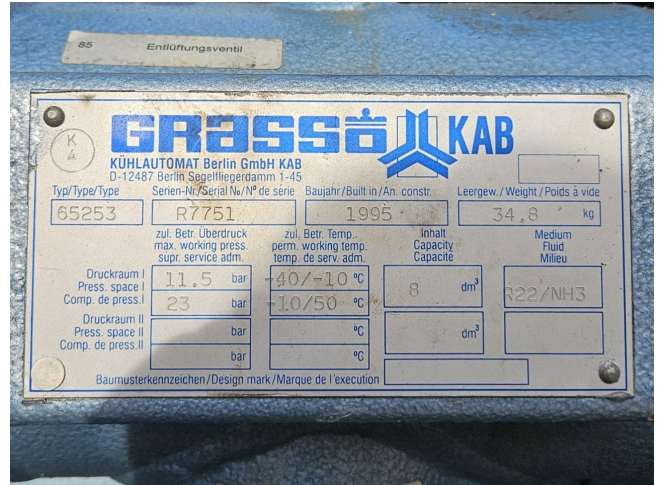


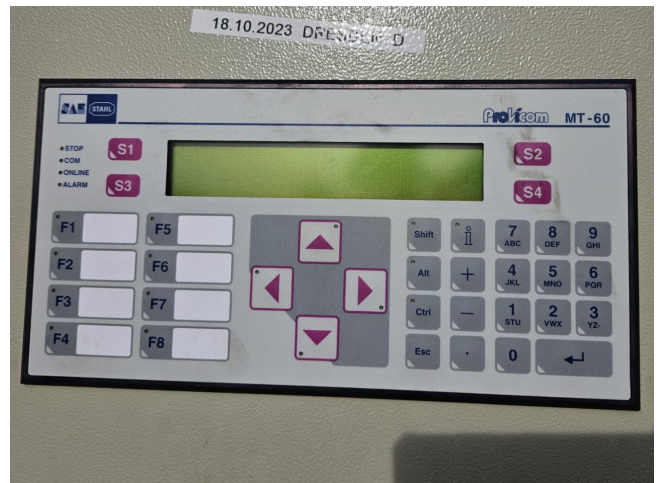
			
KÜHLAUTOMAT Berlin GmbH KAB D-12487 Berlin Segelfliegerdamm 1-45			
Typ./Type/Type	Serien-Nr./Serial No./N° de série	Baujahr/Built in/An.constr.	
L-1	L 0202/409411	1995	
zul. Betr. Überdruck max. working press. Supr. service adm.	28 bar	Kältemittel Refrigerant Frigorigène	R22/NH3
Volumenstrom Flow rate Debit	544 m³/h	Drehzahl Speed Vitesse	2940 1/min
Leergewicht Weight empty Poids à vide	305 kg	Vol. Verh. Vol. ratio Rapp. vol.	2,6













Refrigerant : R134a			
Capacity (Specified : 1000kW)	kW	1000,0	96,28 %
Input power (Motor margin : 26,0%)	kW	157,9	Max : 198,9
Shaft power	kW	148,2	2965rpm
COP		6,33	
FLA	A	257,1	LRA : 2201,0
Inrush current	A	990,5	

Condensing temperature	°C	Evap.	Cond.
Evaporating temperature	°C	5,02	33,62

Inlet temperature	°C	Water	Water
Outlet temperature	°C	12,00	27,00
Volume flow rate	l/s	8,00	32,00
Velocity	m/s	39,7	55,4
Fouling factor	K.m2/W	1,17	2,29
Pressure (gas)	kPa	0,000018	0,00005
Freezing temperature	°C	35,0	75,0
Pass count		0,0	
Tube N°		2	2
Tube type		181	260
Tube material		TurboBII	TurboCSL
Tube thickness	in	CU	CU
		0,025	0,025

% Load	Capacity (kW)	ECWI (°C)	COP
100	1000,0	27,0	6,3
75	750,0	22,7	7,2
50	499,9	18,3	7,2
25	250,0	18,3	6,8